

**SMD Series****Medium Security Access Doors**

**Doors** are ideally suited for new installations or for remodeling, jails, prisons, psychiatric institutions, and schools.

**Door and Frame** are fabricated from 12 gage, galvanized steel with a prime coat gray finish.

**Frame** is fabricated from 12 gage, galvanized steel with a prime coat gray finish and provided with bolt holes.

**Pivoting Rod Hinge** continuous, concealed.

**Latch** is allen head with security pin.

**Finish** is a prime coat gray.

**Guide Specification**

Provide Elmdor® SMD Series, Medium Security Access Doors (Specify model number and options). Access door and frame shall be fabricated from 12 gage, galvanized steel with a prime coat gray finish. The door shall have rounded safety corners and a concealed pivoting rod hinge. Frame shall be one piece construction with no mitres or welds on the face. Latch shall be allen head with security pin operated. Finish shall be a prime coat gray.



Member of U.S. Green  
Building Council

**SMD**

Rev: 08/11/15

Recyclable  
Product



## MODEL NUMBER AND OPTIONS SELECTION

## BASE MODEL NUMBER

☐ SMD Medium Security Access Door  
(12 Gage Steel)

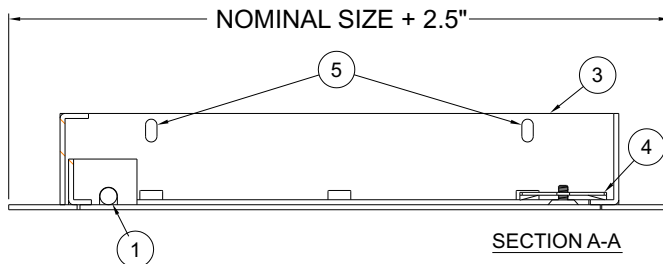
## Suffix Options

☐ - CL Cylinder Lock (one per door)  
☐ - SS Stainless Steel Construction  
(Type 304 No. 4 Satin Finish)

## STANDARD AVAILABLE SIZES

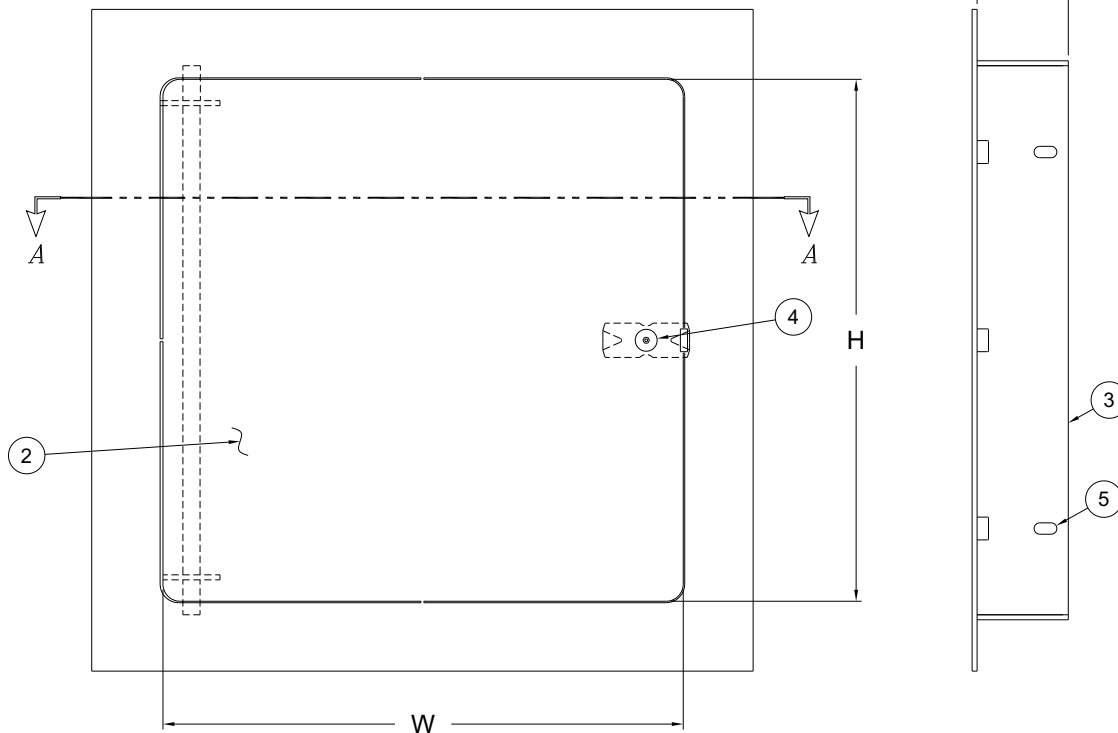
Special sizes available upon request.

NOMINAL DOOR SIZE (IN.)	W x H	LATCHES	LBS.
SMD 12" x 12"	11-1/2" x 11-1/2"	1	12
SMD 16" x 16"	15-1/2" x 15-1/2"	2	18
SMD 18" x 18"	17-1/2" x 17-1/2"	2	22
SMD 24" x 24"	23-1/2" x 23-1/2"	4	34
SMD 24" x 36"	23-1/2" x 35-1/2"	5	47
SMD 34" x 36"	33-1/2" x 35-1/2"	5	65



## NOTES:

1. CONCEALED PIVOTING ROD HINGE
2. DOOR
3. FRAME
4. ALLEN HEAD WITH SECURITY PIN
5. MOUNTING HOLES



Dimensions are subject to manufacturer's tolerance of plus or minus 1/4". Elmdor/Stoneman assumes no responsibility for use of void or suspended data. Please visit [www.elmdorstoneman.com](http://www.elmdorstoneman.com) for most current specifications. © Copyright 2009 Elmdor/Stoneman, City of Industry, CA, A Division of Acorn Engineering Company.

## SELECTION SUMMARY &amp; APPROVAL FOR MANUFACTURING

Model Number & Options \_\_\_\_\_ Quantity \_\_\_\_\_  
Company \_\_\_\_\_ Date \_\_\_\_\_  
Contact \_\_\_\_\_ Title \_\_\_\_\_  
Approval for Manufacturing/Signature \_\_\_\_\_

SMD

Rev: 08/11/15